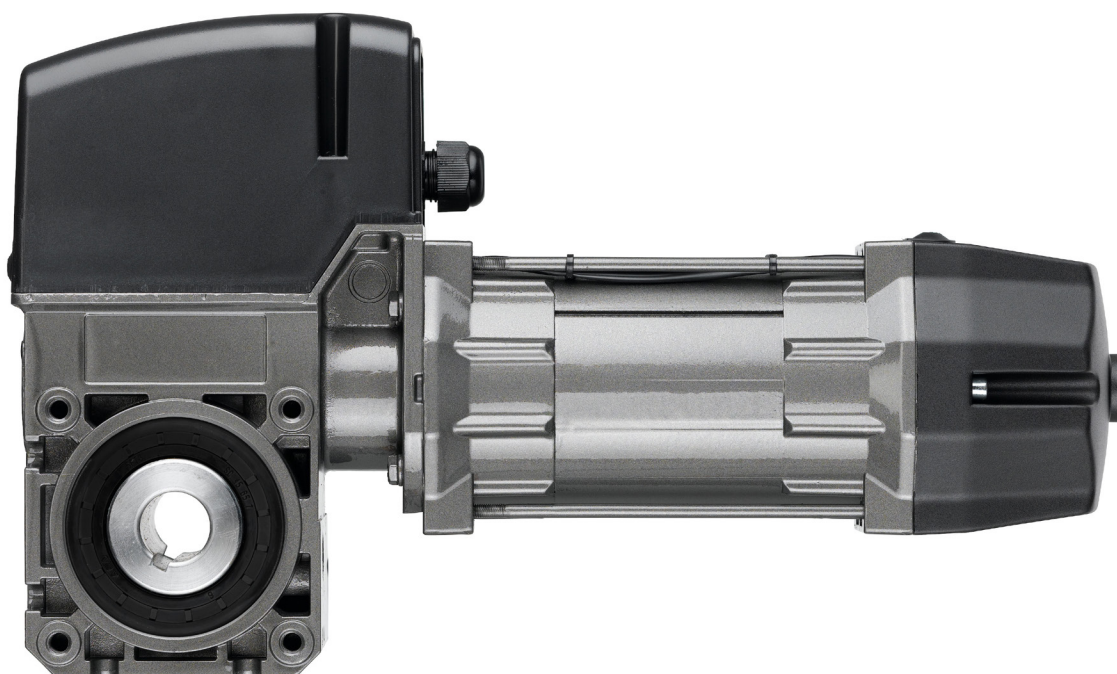


STA Series

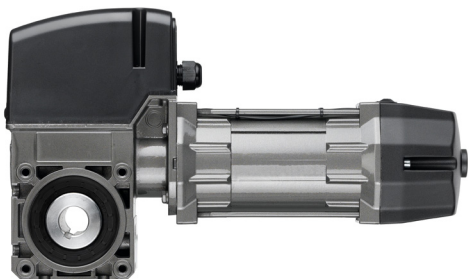
Medium & Standard Duty AC Powered Commercial
Direct Drive Door Operator for Spring Balanced
Sectional and Rolling Steel Doors



Learn More

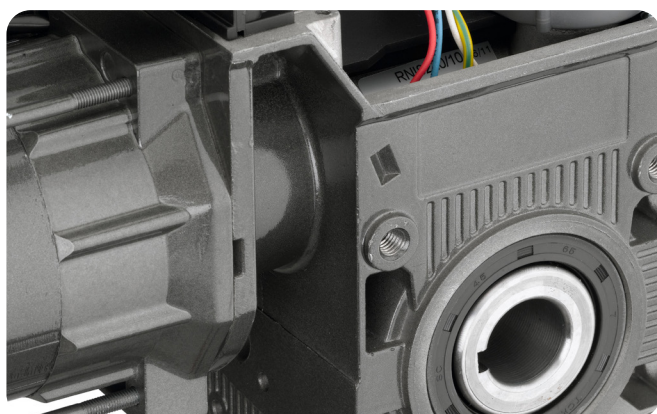
Marantec America Corporation
5705 Centerpoint Court
Gurnee, Illinois 60031
tel: 1-888-622-2489
www.marantecamerica.com

STA Series

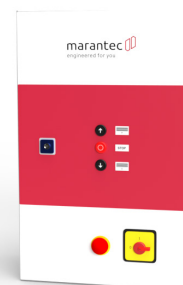


Features: STA Series

- 3 Phase Direct-drive AC motor with thermal protection or single phase with frequency inverter.
- Ideal for high-lift and vertical lift tracks.
- Standard lift and variable speed with frequency inverter.
- Doors up to 540 sq ft with a max door height of 32 ft.
- Direct-drive operator, for shaft side-mount or center mount installation.
- Electronic limits with absolute encoder.
- Quick and easy installation and floor level programming with the use of the external CS 320 control box.
- On-board instant reverse.



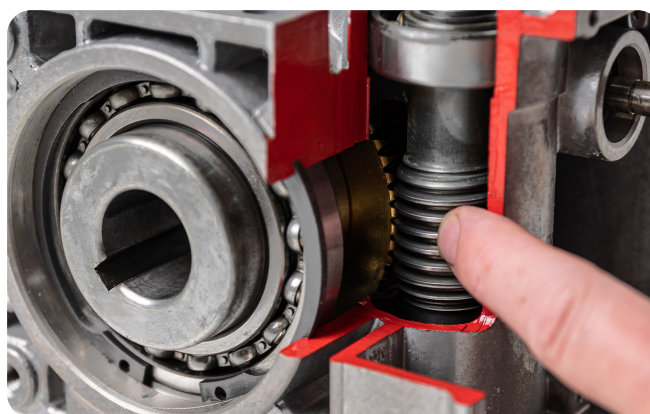
CS 320 External Control Box



*for illustration purposes only

Features: CS 320 External Control Box

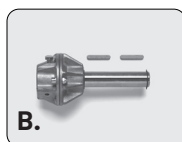
- Designed for use in industrial areas on most types of commercial doors.
- Integrated 3 button Open-Close-Stop for standard operation.
- Works with Marantec commercial operators featuring an electronic absolute encoder or mechanical limit switch (MEC) or an electronic limit position system (AWG).
- Connects to multiple command and safety devices.
- Programming takes place via a pluggable LCD monitor.
- Optional version with frequency inverter available.
- IP 65 for steel enclosure and IP 54 for Polyurethane enclosure.
- UL 325 Commercial Listed.



Technical Data

Description	STA
Drive Motor Speed	28 RPM
Maximum Safety Catch Torque	N/A
Static Holding Torque	2,160 lbs
Power Specs	240V/480V/60Hz/3 Phase
Control Voltage	24V
Maximum Cycles per Hour	30
Maximum Cycles per Day	720
Temperature Range	-4 F / 140 F
Continuous Sound Pressure Level	< 70
Unit Weight	Up to 50.7 lbs
Maximum Output Revolutions	20
Shaft Diameter	1" or 1.25"
Connection to the Drive Shaft	Direct

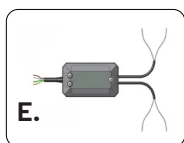
Accessories



Item	Part No.	Description
A	158766	315 Mhz Remote Activation Kit Includes: 2 button remote, receiver, and remote holder



B	64976	Drive Shaft Adapter - Keyed Solid Shaft 1"
C	185016	Industrial Photo Eyes Indoor use, NEMA 1 rated, max. range of 30 ft.



D	185017	NEAM 4X Photo Eyes Flexible rubber housings resist water spray/ corrosion; indoor/outdoor use, IP65 rated; max range of 45 ft.
---	--------	--

E	185018	Connect Kit for Dual Photo Eye Configuration
F	159261	Signal Light 950 - Amber
G	148414	Light 100 Red/Green Traffic Light (Not Pictured)



Backed by our
2 Years or 40,000 Cycles Warranty



I.C./ F.C.C.
 Certified

Operator Dimensions

Operator will differ in size
depending on model

