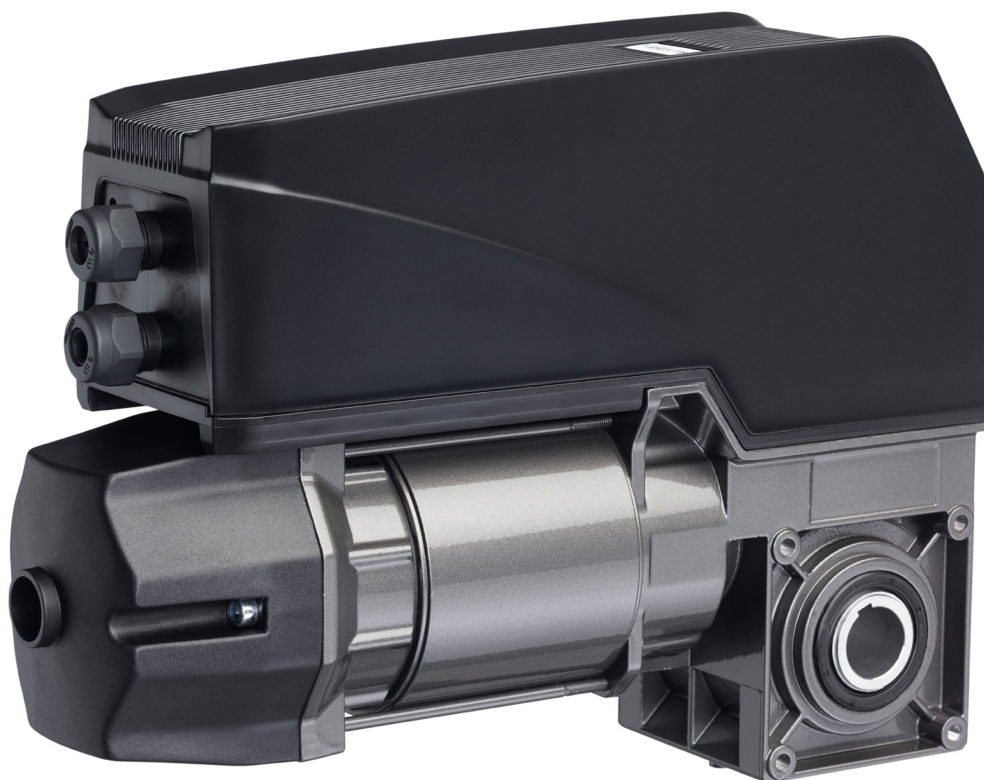


VTA Series

Medium & Standard Duty DC Powered Commercial Direct Drive Door Operator for Spring Balanced Sectional Doors

Model Numbers: 14-61, 11-62, 11-72



Marantec America Corporation
5705 Centerpoint Court
Gurnee, Illinois 60031
tel: 1-888-622-2489
www.marantecamerica.com

VTA 14-61



A balance of power and performance

VTA 11-62



The choice for larger sectional doors

VTA 11-72



Designed for heavier duty applications

Features

- Ultra-quiet DC motor.
- Variable programmable speed levels.
- Soft start & stop, open & close speed eliminates the need for cable tensioner.
- Ideal for standard-lift, high-lift, and vertical-lift tracks.
- Can be installed and programmed in minutes.
- Built-in automatic closing with pre-set 15 second intervals or custom time.
- 3 button open-close-stop for standard operation.
- Patented automatic input voltage detection system: 110V to 220V 60Hz, single phase.
- Direct drive operator, shaft side-mount or center-mount installation.
- Electronic limits with absolute encoder
- Battery backup compatible.
- On-board instant reverse.

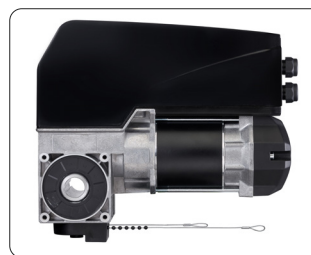
Model Numbers

- 183950** - VTA Starter Set, Keyway, Quick Release (E)
- 183951** - VTA Starter Set, Keyway, Emergency Hand Chain (KE)
- 186533** - Large Door VTA Drive 11-62 w/ Quick Release (E)
- 186532** - Large Door VTA Drive 11-62 w/ Emergency Hand Chain(KE)
- 186267** - Heavy Duty VTA Drive 11-72 w/ Quick Release (E)
- 186268** - Heavy Duty VTA Drive 11-72 w/ Emergency Hand Chain(KE)
- 183259** - Heavy Duty 1.25" Shaft VTA Drive 11-72 w/ Quick Release (E)
- 186258** - Heavy Duty 1.25" Shaft VTA Drive 11-72 w/ Emergency Hand Chain(KE)

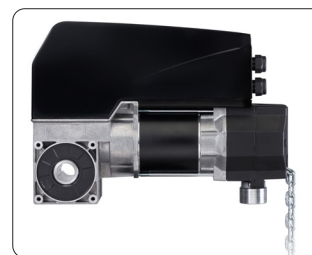
Backed by our
2 Years or 40,000 Cycles Warranty



I.C./ F.C.C. Certified



Quick Release(E)

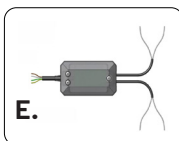
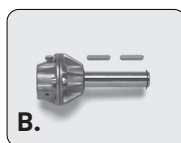


Emergency Hand Chain(KE)

Technical Data
(E) = Quick Release Model
(KE) = Emergency Chain Hoist Model

Description	VTA 14-61	VTA 11-62	VTA 11-72
Item No: 1 in Shaft Diam (E)	183950	186533	186267
Item No: 1 in Shaft Diam (KE)	183951	186532	186268
Item No: 1.25 in Shaft Diam (E)	-	-	186529
Item No: 1.25 in Shaft Diam (KE)	-	-	186528
Dimensions (E KE)	4.1x10.1x11.1 14.9 (in)	4.1x10.9x14.1 15.7 (in)	4.1x10.9x14.1 15.7 (in)
Drive Shaft Type	Hollow or Solid	Solid	Solid
Output Torque	25 Nm	35 Nm	45 Nm
Static Holding Torque	897 lbs	1346 lbs	1346 lbs
Motor RPM	24 min-1	24 min-1	19 min-1
Max Door Size	194	269	307
Max Drum Size (diam)	6.3 in	8.9 in	8.9 in
Max Cycles (up/down) per hour	20	20	20
Max Cycles (up/down) per day	450	450	450
Emergency Operation	E KE	E KE	E KE
Power Specs	84-265, 1 Phase, 60Hz	84-265, 1 Phase, 60Hz	84-265, 1 Phase, 60Hz
Switching Power Supply	1	2	2
Current Rating (Amps)	1.1 - 2.5A	2.2A	2.2A
DC Power Out	24V	24V	24V
Circuit Amps	16A	16A	16A

Accessories



Item	Part No.	Description
A	158766	315 Mhz Remote Activation Kit Includes: 2 button remote, receiver, and remote holder
B	64976	Drive Shaft Adapter - Keyed Solid Shaft 1"
C	185016	Industrial Photo Eyes Indoor use, NEMA 1 rated, max. range of 30 ft.
D	185017	Dual-Sided Photo Eyes Flexible rubber housings resist water spray/ corrosion; indoor/outdoor use, NEMA 4x rated; max range of 45 ft.
E	185018	Connect Kit for Dual Photo Eye Configuration
F	159261	Signal Light 950 - Amber
G	148414	Light 100 Red/Green Traffic Light (Not Pictured)

Operator Dimensions

Legend	VTA 14-61(E) Quick Release	VTA 14-61(KE) Emergency Chain Hoist	VTA 11-62(E) Quick Release	VTA 11-62(KE) Emergency Chain Hoist	VTA 11-72(E) Quick Release	VTA 11-72(KE) Emergency Chain Hoist
A	0.25	0.25	0.25	0.25	0.25	0.25
B	0.08	0.08	0.14	0.14	0.14	0.14
C	1	1	1	1	1 or 1.25	1 or 1.25
D	10.16	10.16	10.91	10.91	10.91	10.91
E	4.74	4.74	5.51	5.51	5.51	5.51
F	3.37	3.37	4.13	4.13	4.13	4.13
G	1.79	1.79	2.17	2.17	2.17	2.17
H	4.25	4.25	4.72	4.72	4.72	4.72
I	0.98	N/A	N/A	N/A	N/A	N/A
J	1.79	1.79	2.17	2.17	2.17	2.17
K	3.62	3.62	4.25	4.25	4.25	4.25
L	5.81	5.81	5.71	5.71	11.93	5.71
M	12.03	12.03	11.93	11.93	13.9	11.93
N	4.09	4.09	4.09	4.09	4.09	4.09
O	13.23	13.23	13.23	13.23	13.23	13.23
P	14.09	N/A	14.09	N/A	14.09	N/A
Q	N/A	3.94	3.94	3.94	3.94	3.94
R	N/A	N/A	13.9	N/A	13.9	N/A
S	N/A	15.67	N/A	15.67	N/A	15.67

