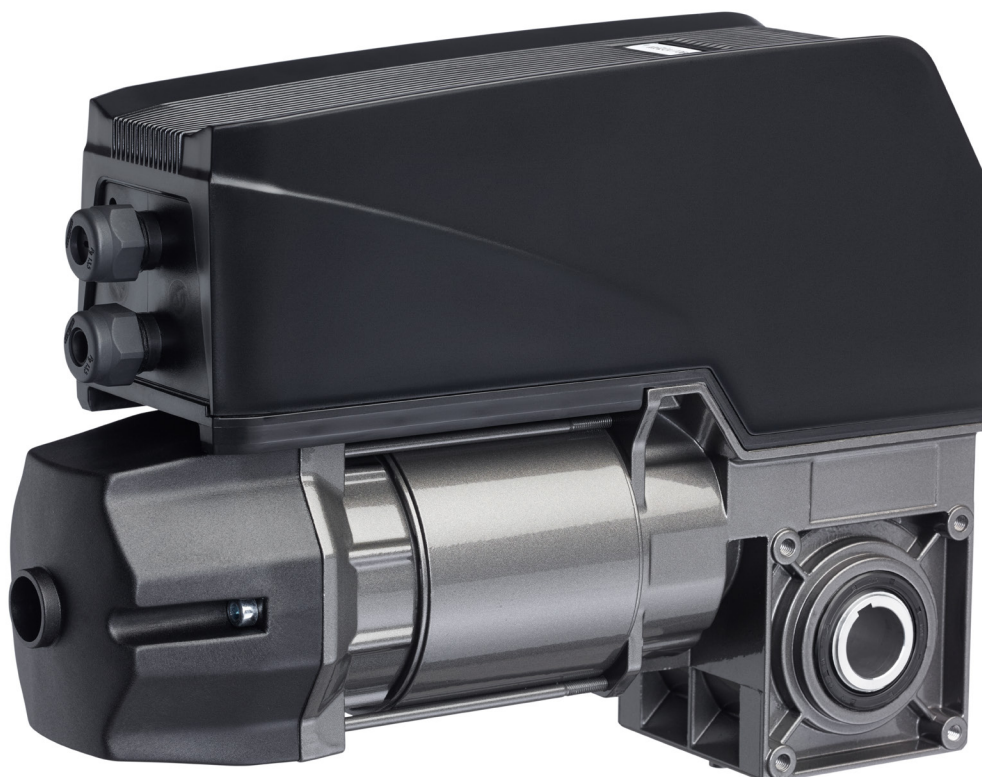


# VTA Series

Medium & Standard Duty DC Powered Commercial Direct Drive Door Operator for Spring Balanced Sectional Doors

Model Numbers: 14-61, 11-62, 11-72



Marantec America Corporation  
5705 Centerpoint Court  
Gurnee, Illinois 60031  
tel: 1-888-622-2489  
[www.marantecamerica.com](http://www.marantecamerica.com)

**VTA 14-61**



A balance of power and performance

**VTA 11-62**



The choice for larger sectional doors

**VTA 11-72**



Designed for heavier duty applications

**Features**

- Ultra-quiet DC motor.
- Variable programmable speed levels and onboard instant reverse.
- Soft start & stop, open & close speed eliminates the need for cable tensioner.
- Ideal for standard-lift, high-lift, and vertical-lift tracks.
- Can be installed and programmed in minutes.
- Built-in automatic closing with pre-set 15 second intervals or custom time.
- 3 button open-close-stop for standard operation.
- Patented automatic input voltage detection system: 110V to 220V 60Hz, single phase.
- Direct drive operator, shaft side-mount or center-mount installation.
- Electronic limits with absolute encoder
- Battery backup compatible.
- Wi-Fi door operation with Maveo Pro.

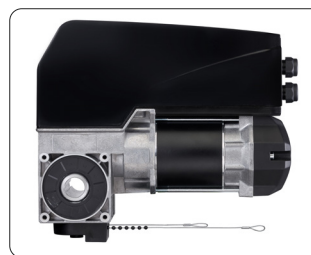
**Model Numbers**

- 183950** - VTA Starter Set, Keyway, Quick Release (E)
- 183951** - VTA Starter Set, Keyway, Emergency Hand Chain (KE)
- 186533** - Large Door VTA Drive 11-62 w/ Quick Release (E)
- 186532** - Large Door VTA Drive 11-62 w/ Emergency Hand Chain(KE)
- 186267** - Heavy Duty VTA Drive 11-72 w/ Quick Release (E)
- 186268** - Heavy Duty VTA Drive 11-72 w/ Emergency Hand Chain(KE)
- 183259** - Heavy Duty 1.25" Shaft VTA Drive 11-72 w/ Quick Release (E)
- 186258** - Heavy Duty 1.25" Shaft VTA Drive 11-72 w/ Emergency Hand Chain(KE)

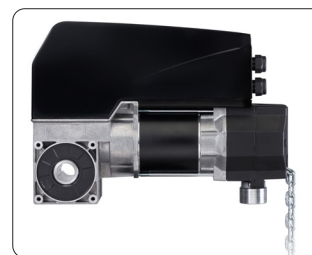
Backed by our **2 Years or 40,000 Cycles Warranty**



I.C./ F.C.C. Certified



Quick Release(E)



Emergency Hand Chain(KE)



### Operator Dimensions

Legend	VTA 14-61(E) Quick Release	VTA 14-61(KE) Emergency Chain Hoist	VTA 11-62(E) Quick Release	VTA 11-62(KE) Emergency Chain Hoist	VTA 11-72(E) Quick Release	VTA 11-72(KE) Emergency Chain Hoist
A	0.25	0.25	0.25	0.25	0.25	0.25
B	0.08	0.08	0.14	0.14	0.14	0.14
C	1	1	1	1	1 or 1.25	1 or 1.25
D	10.16	10.16	10.91	10.91	10.91	10.91
E	4.74	4.74	5.51	5.51	5.51	5.51
F	3.37	3.37	4.13	4.13	4.13	4.13
G	1.79	1.79	2.17	2.17	2.17	2.17
H	4.25	4.25	4.72	4.72	4.72	4.72
I	0.98	N/A	N/A	N/A	N/A	N/A
J	1.79	1.79	2.17	2.17	2.17	2.17
K	3.62	3.62	4.25	4.25	4.25	4.25
L	5.81	5.81	5.71	5.71	11.93	5.71
M	12.03	12.03	11.93	11.93	13.9	11.93
N	4.09	4.09	4.09	4.09	4.09	4.09
O	13.23	13.23	13.23	13.23	13.23	13.23
P	14.09	N/A	14.09	N/A	14.09	N/A
Q	N/A	3.94	3.94	3.94	3.94	3.94
R	N/A	N/A	13.9	N/A	13.9	N/A
S	N/A	15.67	N/A	15.67	N/A	15.67

